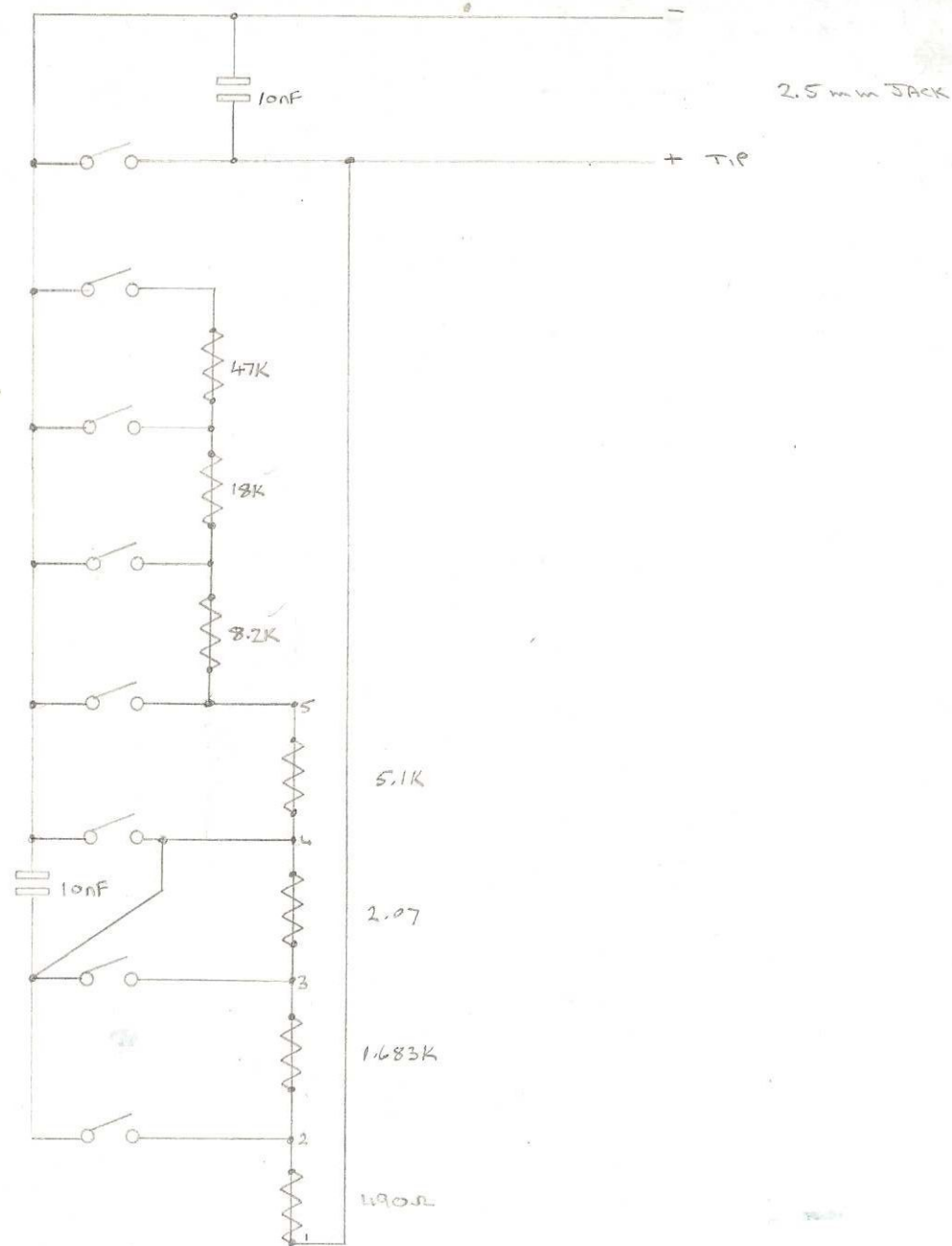
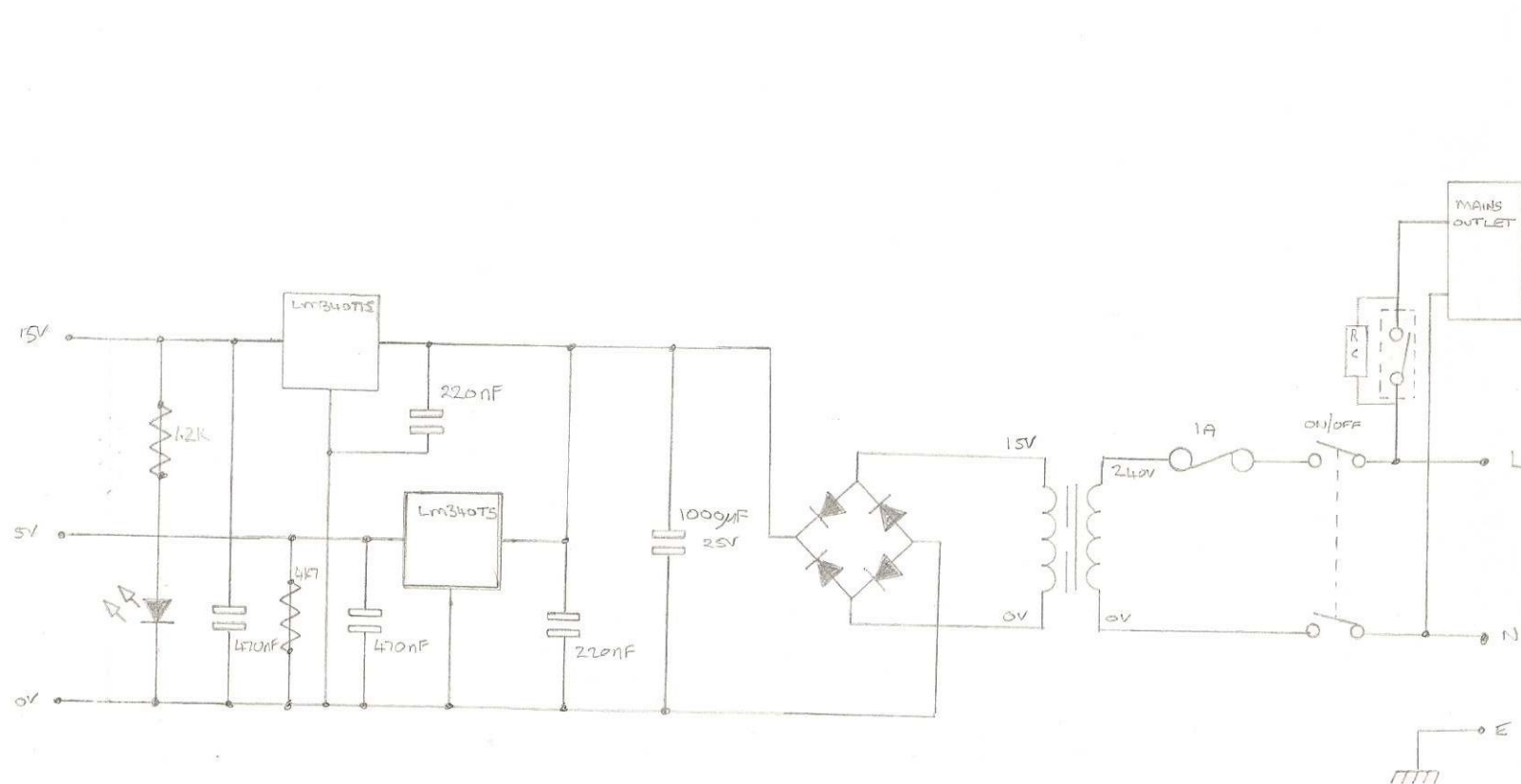


I.R. RECEIVER output.

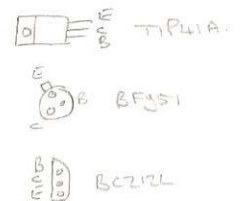
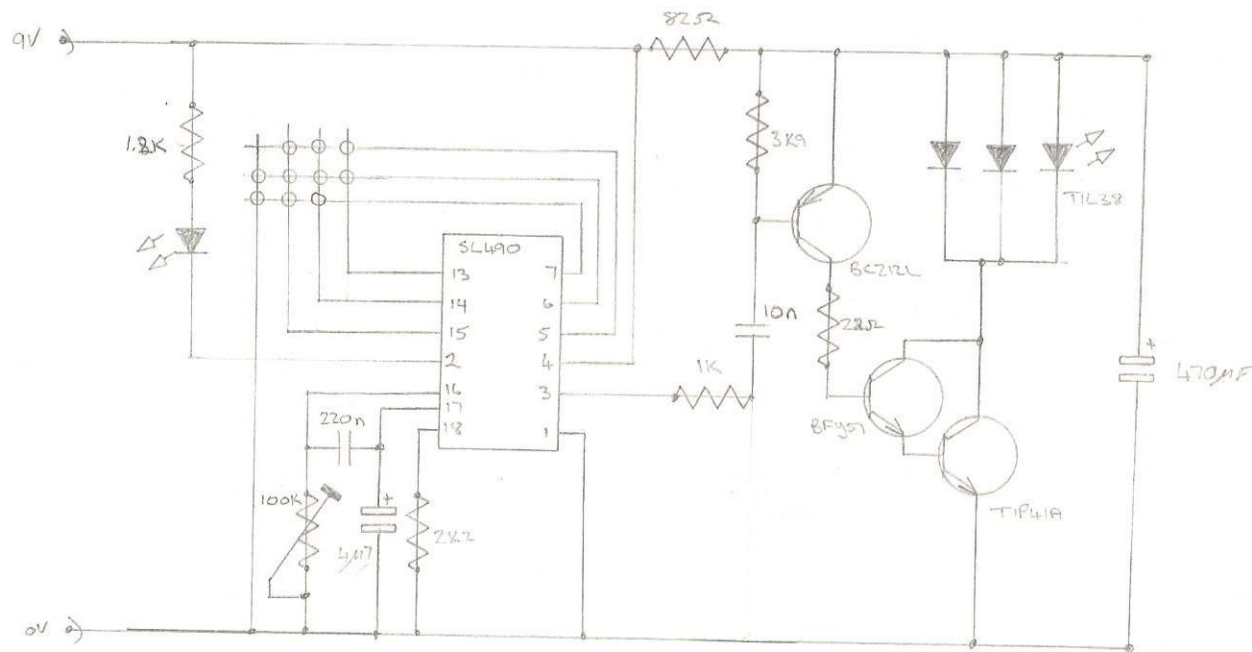
RLA - 15mA



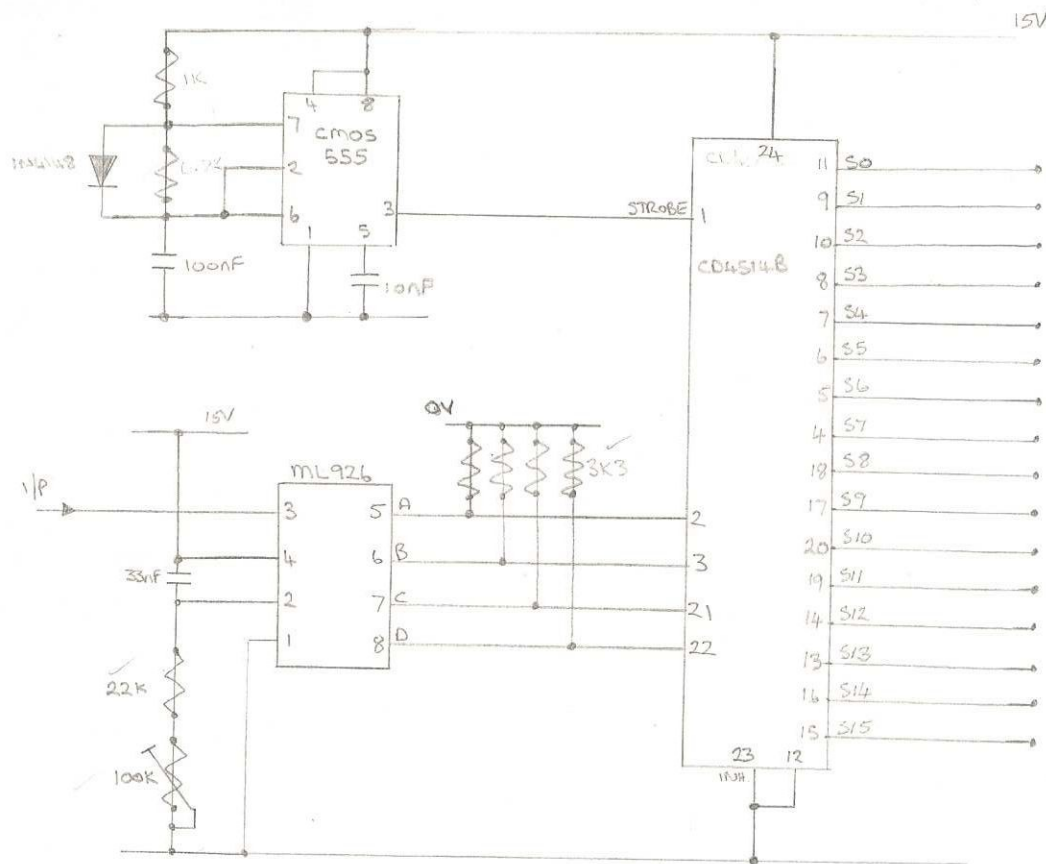


15V - 65 mA

5V -



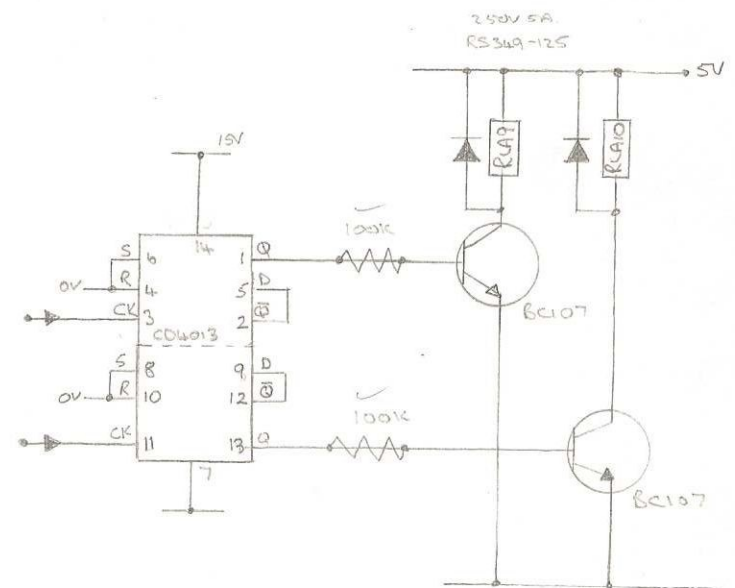
Tx 35mA,
 adjust preset for modulation rate.



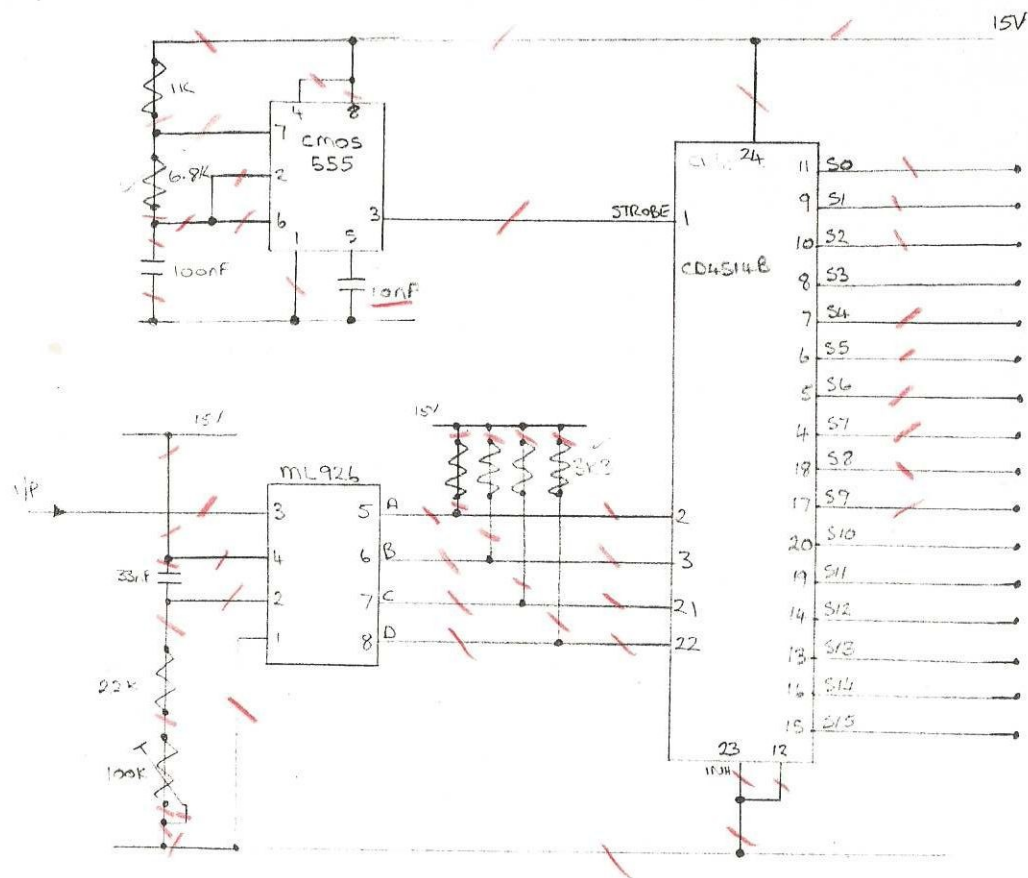
adjust preset for a osc period of 280 μ s.

INFRARED RECEIVER

DVD.DVB
 F.F.
 CH.
 SP
 REC
 PLAY
 PAUSE
 ON/OFF
 STOP
 REWIND
 (NOT USED)



TV ON/OFF.



REC
A+B-DUB
F.F.
CH.
SP
REC-AUDIO
PLAY
PAUSE
ON/OFF
STOP
REWIND
NOT USED

